

FD 280 Tabber shown inline with FD 382 Folder

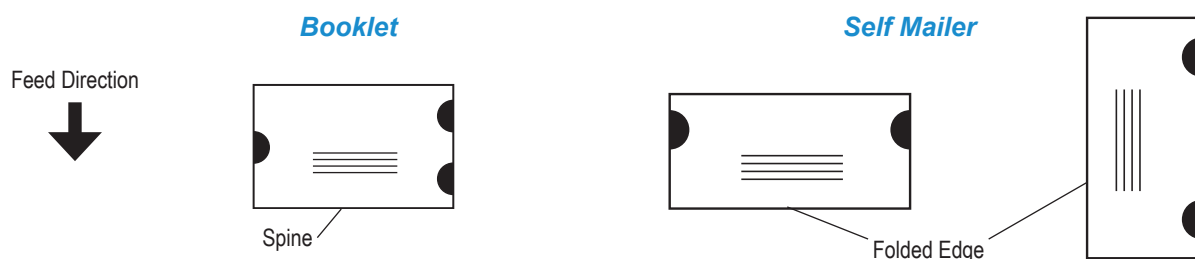
FD 280 Tabber shown with optional FD 280-10 Heavy Duty Feeder

The Formax **FD 280 Double-Head Edge Tabbing System** creates mail-ready pieces by applying multiple edge tabs per piece in various positions, processing over 15,000 pieces per hour. With user-friendly controls, it has the ability to change between 1" and 1.5" tabs simply by flipping a switch.

A variety of 1" and 1.5" tab stocks can be used, including clear, translucent and paper. Built-in waste take-up spools reduce down time, and for increased efficiency, tabs can be fed fan-folded or from rolls for higher volume. The FD 280 can also be used in-line with other tabletop labelers, feeders, printers and folders, including the Formax FD 342, FD 382 and FD 38X.

With the addition of the optional **FD 280-10 Heavy Duty Feeder**, operators can input a stack of up to 12" of material to be tabbed, up to 3/8" thick. The optional **FD 280-20 High Volume Tab Delivery Module** handles rolls of up to 150,000 tabs, which reduces down-time caused by reloading tabs. The optional **FD 260-20 Conveyor** offers adjustable speed from 0 - 120 fpm, and stacks tabbed pieces in a neat, sequential order for easy removal.

Various Tabbing Positions



FD 280 Double-Head Edge Tabber Specifications

Speed:	Tabs over 15,000 pieces per hour
Tabs Applied:	Up to 3 tabs per pass
Document Sizes:	3.5" - 9" H x 5.5" - 12" W
Document Thickness:	Up to .2" thick
Tab Varieties:	1" or 1.5" tabs, clear, translucent or paper, circles or rectangles, on rolls with or without tractor holes, high volume fan folded
Dimensions:	20" L x 19" H x 23" W
Weight:	60 lbs
Power:	115V, 4A, 60Hz or 230V, 2A, 50Hz
Options:	FD 280-10 Heavy Duty Feeder, FD 280-20 High Volume Tab Delivery Module, FD 260-20 Conveyor



FD 280 Double-Head Edge Tabber

FD 280-10 Heavy Duty Feeder Specifications

Speed:	Feeds up to 250 feet per minute
Document Sizes:	3.5" to 12" wide, up to 12" long
Document Thickness:	Up to .375" thick
Hopper Capacity:	Stack height up to 12"
Dimensions:	24" L x 24" H x 19" W
Weight:	65 lbs
Power:	120V, 50-60Hz
Features:	Friction feed, reinforced paper guides, card stack pressure plates, oscillating feeder rolls, twin separators



FD 280-10 Heavy Duty Feeder

FD 280-20 High Volume Tab Delivery Module Specifications

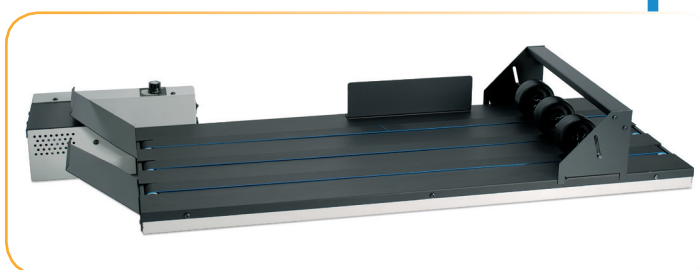
Speed:	Feeds up to 60,000 1" tabs per hour
Tab Width:	Between 1" and 1.5"
Tab Length:	1" - 1.5"
Backing Paper Width:	1" - 2"
Maximum Roll Diameter:	12" (50,000 1.5" tabs per roll or 150,000 1" tabs)
Roll Core Diameter:	3"
Dimensions:	12.5" L x 17.5" H x 16" W
Weight:	45 lbs
Power:	120V, 60Hz
Features:	Rolls may be spliced together to avoid rethreading



FD 280-20 High Volume Tab Delivery Module

FD 260-20 Conveyor Specifications

Speed:	Adjustable, from 0 - 120 fpm
Document Sizes:	Up to 16" wide, unlimited length
Dimensions:	40" L x 5.5" H x 18.5" W
Weight:	40 lbs
Power:	115V, 2A, 60Hz or 230V, 1A, 50Hz
Features:	Weight wheel assembly included



FD 260-20 Conveyor